



para-JEM[®] Veterinary Products

TREK
DIAGNOSTIC SYSTEMS

Setting global standards for Johne's Disease detection

para-JEM Reagents



Developed specifically for detection of *M. avium ssp. paratuberculosis* testing

- Offers Faster Detection
 - Able to recover MAP in as little as 2-3 weeks, much earlier than conventional methods*
- Increases Overall Sensitivity Over Conventional Methods*
- Provides Semi-Quantitation for Low, Medium and High Shedders Based on Time-to-Detection*
- Reduces Labor with Less False Positives, False Negatives, and Contaminants*
- Improves Workflow with Most Tests Concluded at 6 Weeks for High, Medium and Many Low Shedders*



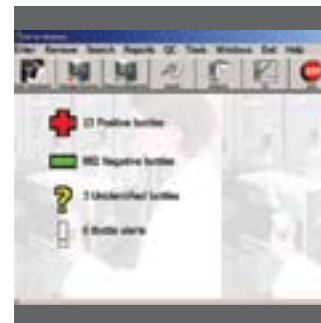
Solid medium culture was the standard procedure for the detection of *M. avium ssp. paratuberculosis* in ruminant fecal samples before *para-JEM* reagents. Due to the long generation time of the bacterium, it can take up to 12 weeks incubation on solid medium before the bacteria are detected. In collaboration with several veterinary diagnostic laboratories, TREK has developed a rapid detection method using liquid culture.

para-JEM Software



Begin your TREK to easy bottle management with NEW *para-JEM* Windows Software

- Easy integration from your current DOS computer system
- Fast and simple auto-accession of samples
- Dropdown lists with dictionary capability offer quick data entry
- Lab, smear, molecular, and immunological results recorded quickly and simply
- Automatic data back-ups eliminate the need to archive disks
- Automatic report printing through the Task Scheduler
- Extensive reporting capabilities offer concise sample information at your fingertips



Designed for ease of use, this intuitive software program was developed to make your job easier in the fight against Johne's Disease. *para-JEM* Windows Software offers efficient workflow, smooth processing, rapid access to sample information and improved data retrieval.

para-JEM Systems



Automated diagnostic testing for the detection of *M. avium ssp. paratuberculosis*

Now offering 2 superb automated systems to meet your laboratory's needs! Implement the cost effective ESP® Culture System II platform, or upgrade to the premium VersaTREK® Automated Microbial Detection System.

The ESP Culture System II -- Your cost-effective solution

The ESP Culture System II combines the proprietary *para-JEM* reagent liquid media, growth supplements, and antibiotic supplements with a detection system that automatically incubates and continuously monitors culture bottles. Now available with easy-to-use *para-JEM* Windows Software.

The VersaTREK Automated Microbial Detection System -- Your premium solution

The VersaTREK System utilizes the same unique technology and media as the ESP Culture System II, however, the VersaTREK System also offers the following premium features for our veterinary customers:

- Enhanced ergonomics and workflow
- One Touch LCD Screen
- Powerful barcode scanner
- Easy accessioning through the barcode printer
- 144 more locations than the ESP System

Now you can have the best of both worlds -- Your choice of the ESP Culture System II or the VersaTREK Automated Microbial Detection System!



Customer Testimonials

DVM Newsmagazine (September 2002) cited users obtaining results in as early as 2 weeks with use of TREK's *para-JEM* ESP Culture System II automated liquid culture technology from bovine fecal cultures. Traditional HEY can take as long as 12-16 weeks for final confirmation. Coupling a molecular confirmatory identification test with TREK's ESP *para-JEM* assay may enable the laboratory to handle more samples with a faster turnaround.

"The ESP, a liquid medium based detection system, was able to detect *M. avium ssp. paratuberculosis* in bovine feces 3 to 5 weeks earlier than the standard HEY culture method with greater sensitivity and identical contamination rate."

* Cited as a conclusion from an abstract presented at the 43rd Annual AAVLD Meeting - A New Liquid Culture Method, the TREK ESP Culture System II, for the Rapid Detection of *Mycobacterium avium subsp. paratuberculosis* in Bovine Fecal Samples, S.J.Shin, et. al, College of Veterinary Medicine Diagnostic Laboratory, Cornell University

"The combination of ESP II and para-JEM is more sensitive, faster, and a less labor-intensive method than the conventional HEY culture system approach for detection of Map in bovine fecal samples."

* Cited as a conclusion from an abstract presented at the 45th Annual AAVLD Meeting - Further Evaluation of ESP Culture System II for Detection of *Mycobacterium avium subsp. paratuberculosis* in Bovine Fecal Samples, S.J. Shin, College of Veterinary Medicine Diagnostic Laboratory, Cornell University

"In our experiences thus far, the ESP Culture System II and the VersaTREK System perform identically with respect to results. However, the VersaTREK System has a built-in One Touch LCD screen that makes it easy to view sample status without relying on a desktop computer. The equipment also comes with a barcode scanner and a label printer that allows for ease of sample identification. Each module on the VersaTREK System has three single rows that are appropriately spaced, thereby making sample loading and tracking easier. The increased sample capacity from 384 on the ESP unit to 528 on the VersaTREK unit is attractive when high volume testing is of concern."

Ogi Okwumabua, Ph.D.

Microbiology Section Head, Wisconsin Veterinary Diagnostic Laboratory-Madison

DESCRIPTION

CATALOG NUMBERS

para-JEM Computer Package (Computer with para-JEM Software; Monitor, 15" LCD Touch Screen; Printer, HP Laserjet; Power Conditioner, 360VA, PC; External 8-Port USB Serial Box; AT Adaptor Cable, DB9F-DB25M; Printer Cable, 6', USB 2.0 A/B)

6124-31

para-JEM Operator's Manual

6411-30

para-JEM Kit with BLUE (includes broth, growth supplements, antibiotic, para-JEM BLUE and connectors for 250 tests)

7137-42

VersaTREK 528 with 22 Drawers

6528-22

VersaTREK EZ-ID Labels

6450-35

Zebra TLP 3842 Printer

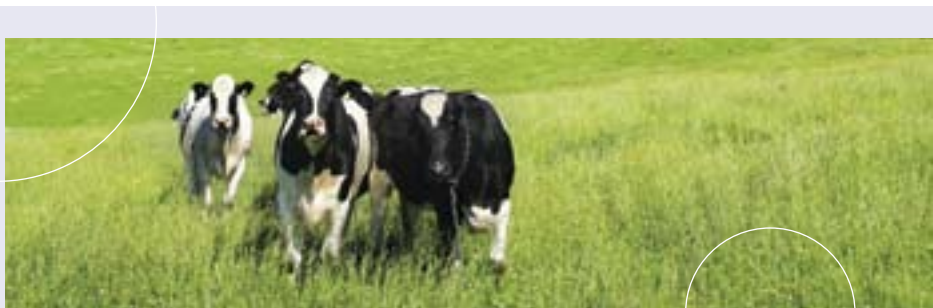
SW1000

Labels for Zebra Printer

SW1101

para-JEM Starter Kit (Location Disabler Caps, Red; Thermometer; Label, Drawer, Numbered 1-22; Stylus, 4-Pack; Rack; Bottle Carrying, 24-Positions; Absorbent Sheet; Cable, CAT5E Pelnum Patch, 25' Hex, L-Key, 5/64" x 3 13/64" L; Stylus Holder; VersaTREK EZ-ID Labels, 100 Pack)

6498-31



Questions or comments?

Please contact us at:

U.S.
800.871.8909

U.K.
+44.1342.318777

www.trekds.com

TREK
DIAGNOSTIC SYSTEMS