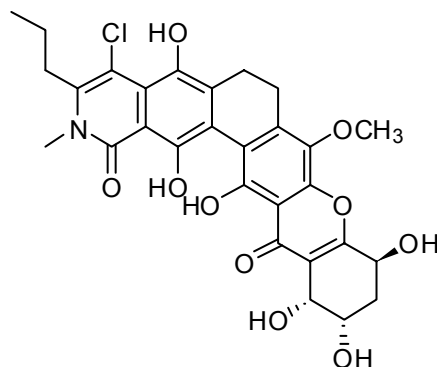


Kibdelone C

Code: **BIA-K1331**

Pack sizes: **1 mg, 5 mg**



Synonyms :

Specifications

CAS #	: 934464-79-6
Molecular Formula	: C ₂₉ H ₂₈ ClNO ₁₀
Molecular Weight	: 586.0
Source	: <i>Kibdelosporangium</i> sp.
Appearance	: Orange solid
Purity	: >95%
Storage	: -20°C
Solubility	: Soluble in ethanol, methanol, DMF or DMSO. Limited water solubility.

Application Notes

Kibdelone C is the major analogue of a potent antitumor complex isolated from *Kibdelosporangium* sp.. Structurally, kibdelone C is related to lysolipin and albofungin, however no comparative investigation of this class has been reported. The mode of action and pharmacology of the kibdelones has received little attention.

References

1. Kibdelones: novel anticancer polyketides from a rare Australian actinomycete. Ratnayake R. *et al.* Chem. Europ. J. **2007**, 13, 1610.