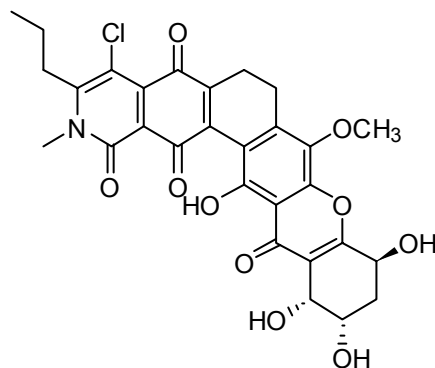


## Kibdelone B

Code: **BIA-K1330**

Pack sizes: **0.5 mg, 2.5 mg**



Synonyms : -

### Specifications

CAS #	: 934464-78-5
Molecular Formula	: C <sub>29</sub> H <sub>26</sub> ClNO <sub>10</sub>
Molecular Weight	: 584.0
Source	: <i>Kibdelosporangium</i> sp.
Appearance	: Orange solid
Purity	: >95%
Storage	: -20°C
Solubility	: Soluble in ethanol, methanol, DMF or DMSO. Limited water solubility.

### Application Notes

Kibdelone B is a minor analogue of a potent antitumor complex isolated from *Kibdelosporangium* sp.. Structurally, kibdelone B is related to lysolipin and albofungin, however no comparative investigation of this class has been reported. The mode of action and pharmacology of the kibdelones has received little attention.

### References

1. Kibdelones: novel anticancer polyketides from a rare Australian actinomycete. Ratnayake R. *et al.* Chem. Europ. J. **2007**, 13, 1610