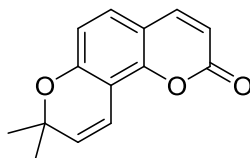


Seselin

Code No.: **BIA-S1776**

Pack sizes: **1 mg, 5 mg**



Synonyms : Amyrolin, Seseline

Specifications

CAS #	: 523-59-1
Molecular Formula	: C ₁₄ H ₁₂ O ₃
Molecular Weight	: 228.2
Source	: <i>Correa reflexa</i>
Appearance	: Light yellow solid
Purity	: >95% by HPLC
Long Term Storage	: -20°C
Solubility	: Soluble in ethanol, methanol, DMF or DMSO.

Application Notes

Seselin is a pyranocoumarin isolated from the fruits of *Seseli indicum* by Spath and colleagues in 1939. Seselin was subsequently isolated from a number of fruits of diverse species, most notably star anise. More recently, seselin has been isolated efficiently from the Australian native fuchsia, *Correa reflexa*, by pressurised hot water extraction. Seselin plays an important role in the regulation of root growth. Seselin inhibits radicle growth in seedlings and antagonises gibberellic acid-induced release of reducing sugars from barley endosperm. Seselin also inhibits the development of blow fly larvae and is anti-inflammatory, cytotoxic, antifungal and spasmodic.

References

1. The mass spectra of some naturally occurring oxygen heterocycles and related compounds. Barnes C.S. & Oocolowitz J.L., Aust. J. Chem. 1964, 17,975.
2. Isolation of seselin from *Clausena anisata* (Rutaceae) leaves and its effects on the feeding and development of *Lucilia cuprina* larvae may explain its use in ethnoveterinary medicine. Mukandiwa L. et al., J. Ethnopharmacol. 2013, 150, 886.
3. Effects of seselin and coumarin on growth, indoleacetic acid oxidase, and peroxidase, with special reference to cucumber (*Cucumis sativa* L.) radicles. Raphael G. & Eliahu T., Plant Physiol. 1971, 47, 312.
4. Natural and synthetic coumarins with effects on inflammation. G. Kirsch et al., Molecules 2016, 21, 1322.
5. Pressurized hot water extraction as a viable bioprospecting tool: Isolation of coumarin natural products from previously unexamined *Correa* (Rutaceae) species. Bianca J.D. et al., Chemistry Select 2017, 2, 2439.