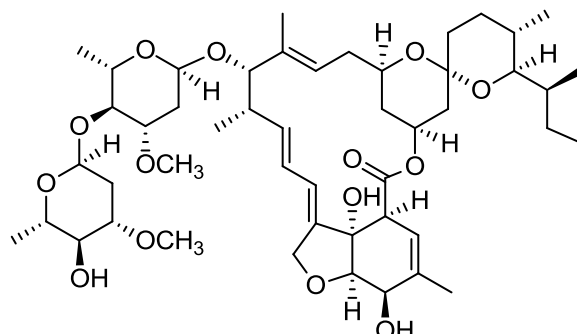


epi-Ivermectin B1a

Code No.: **BIA-I1578**

Pack sizes: **1 mg, 5 mg**



Synonyms :

Specifications

CAS #	:	-
Molecular Formula	:	C₄₈H₇₄O₁₄
Molecular Weight	:	875.1
Source	:	Semi-synthetic
Appearance	:	White solid
Purity	:	>95% by HPLC
Long Term Storage	:	-20°C
Solubility	:	Soluble in ethanol, methanol, DMF or DMSO.

Application Notes

epi-Ivermectin B1a is a base-catalysed intermediate in the decomposition of ivermectin. *epi*-Ivermectin B1a is formed by epimerisation at the 2-position which ultimately rearranges irreversibly to the isomeric alkene analogue, Δ^2 -ivermectin B1a. Despite the importance of ivermectin as an anthelmintic in animal health, there are no published reports of the biological activity or the levels of *epi*-ivermectin B1a in animals or the environment.

References

1. Base-catalyzed isomerization of avermectins. Pivnichny J.V. et al. J. Agric. Food Chem. 1988, 36, 826.
2. Direct determination of avermectins in plasma at nanogram levels by High-Performance Liquid Chromatography. Pivnichny J.V. et al. J. Pharm. Sci. 1980, 72, 1447.

Updated: 2 December 2014