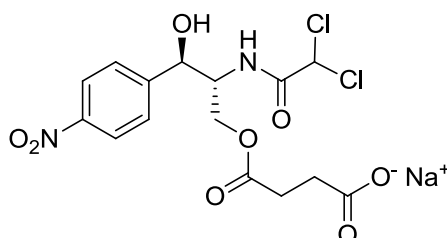


## Chloramphenicol succinate sodium

Code No.: **BIA-C1479**

Pack sizes: **25 mg, 100 mg**



Synonyms : Chloramphenicol sodium succinate

## Specifications

CAS #	: 982-57-0
Molecular Formula	: $C_{15}H_{15}Cl_2N_2O_8Na$
Molecular Weight	: 445.2
Source	: Semi-synthetic
Appearance	: White solid
Purity	: >99% by HPLC
Long Term Storage	: -20°C
Solubility	: Soluble in ethanol, methanol, DMF or DMSO. Good water solubility.

## Application Notes

Chloramphenicol succinate sodium is the salt prepared from chloramphenicol succinate using the free carboxylic acid of the succinate which ionises and readily forms in weak sodium hydroxide solutions. The sodium salt is the preferred formulation for pharmaceutical applications, providing a more readily soluble product. Chloramphenicol succinate is significantly less active than chloramphenicol but acts as a prodrug, forming chloramphenicol in the presence of succinate dehydrogenase.

## References

1. Chloramphenicol succinate, a competitive substrate and inhibitor of succinate dehydrogenase: possible reason for its toxicity. Ambekar C.S. et al. Toxicology in Vitro 2004, 18, 441.

Updated: 2 December 2014