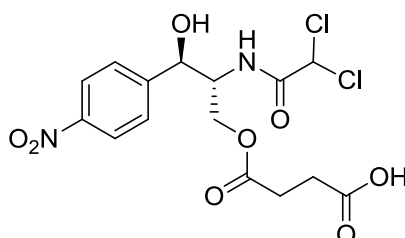


## Chloramphenicol succinate

Code No.: **BIA-C1478**

Pack sizes: **5 mg, 25 mg**



Synonyms : Chloramphenicol succinate, Kemicetine

### Specifications

CAS #	: 3544-94-3
Molecular Formula	: $C_{15}H_{16}Cl_2N_2O_8$
Molecular Weight	: 423.2
Source	: Semi-synthetic
Appearance	: White solid
Purity	: >99% by HPLC
Long Term Storage	: -20°C
Solubility	: Soluble in ethanol, methanol, DMF or DMSO. Moderate water solubility.

### Application Notes

Chloramphenicol succinate is prepared by acylation of chloramphenicol with succinic anhydride to provide a water soluble pro-drug. Chloramphenicol succinate represents an alternative pro-drug strategy for chloramphenicol that has found a niche in surface antibiotic treatment in surgery. Chloramphenicol succinate is significantly less active than chloramphenicol but acts as a prodrug, forming chloramphenicol in the presence of succinate dehydrogenase.

### References

1. Chloramphenicol succinate, a competitive substrate and inhibitor of succinate dehydrogenase: possible reason for its toxicity. Ambekar C.S. et al. Toxicology in vitro 2004, 18, 441.

Updated: 2 December 2014