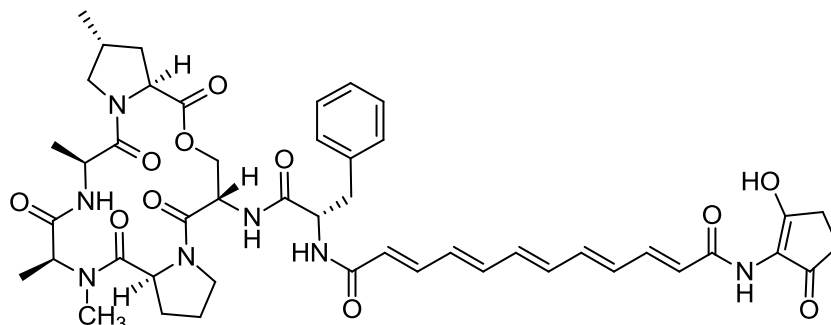


## Enopeptin A

Code No.: **BIA-E1555**

Pack sizes: **0.5 mg, 2.5 mg**



Synonyms : Enopeptin II, BRN 5373924, NSC657143

## Specifications

CAS #	: <b>139601-96-0</b>
Molecular Formula	: <b>C<sub>47</sub>H<sub>57</sub>N<sub>7</sub>O<sub>11</sub></b>
Molecular Weight	: <b>896.0</b>
Source	: <b><i>Streptomyces</i> sp.</b>
Appearance	: <b>Yellow solid</b>
Purity	: <b>&gt;95% by HPLC</b>
Long Term Storage	: <b>-20°C</b>
Solubility	: <b>Soluble in ethanol, methanol, DMF or DMSO.</b>

## Application Notes

Enopeptin A is an unusual depsipeptide featuring a pentaenone side chain, reported as an antiviral by researchers at RIKEN in 1991. Enopeptin A has potent antibacterial activity against Gram positive and Gram negative bacteria, including MRSA. Enopeptin A is the most non-polar of the acyldepsipeptide (ADEP) antibiotics which include the recently rediscovered compounds, A54556 A and B, that act by activating and disregulating Clp-family proteins.

## References

1. The structure of enopeptins A and B, novel depsipeptide antibiotics. Koshino H. et al. Tetrahedron Letters 1991, 32, 7707.
2. Enopeptin A, a novel depsipeptide antibiotic with anti-bacteriophage activity. Osada H. et al. J. Antibiot. 1991, 44, 1436.
3. Structures of ClpP in complex with acyldepsipeptide antibiotics reveal its activation mechanism. Lee B-G. et al. Nature Struct. Mol. Biol. 2010, 17, 471.
4. Medicinal chemistry optimization of acyldepsipeptides of the enopeptin class antibiotics. Hinzen B. et al. Chem. Med. Chem. 2006, 1, 689.

Updated: 2 December 2014